

STC 611 EW

Hostelery oven



Ref. 710464

FEATURES

- Digital display in control panel system
- Rotation inverter
- End of cycle alarm
- Door switch
- Safety thermostat
- Interior LED light
- 3/4" water connection
- 2 speed engine
- Direct steam push button
- Easy to clean folding glass



FUNCTIONS

- 0/100% adjustable humidity
- 0/120 minutes timer
- Non-stop mode
- Manual chimney control

TECHNICAL CHARACTERISTICS

Electric power 7200 W

Maximum temperature 250 °C

Weight 68 kg

Voltage 400 V-50/60 Hz

Connection three phase 3F+N+T

Internal dimensions (An)560x(F)385x(Al)385 mm

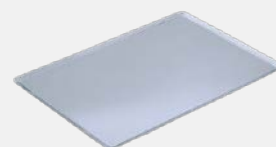
External dimensions (An)720x(F)620x(Al)665 mm

CAPACITY

11 bandejas GN1/1 (20 mm depth)

6 bandejas GN1/1 (40 mm depth)

4 bandejas GN1/1 (65 mm depth)



Transverse tray position



STC 611 EW

Specific accessories



Stands

STC 200 W

Ref. 710477



(W)700x(D)495x(H)200 mm

Nº guides - 0

STC 400 W

Ref. 710478



(W)700x(D)495x(H)400 mm

Nº guides - 4

STC 650 W

Ref. 710479



(W)700x(D)495x(H)650 mm

Nº guides - 8

STC 850 W

Ref. 710480



(W)700x(D)495x(H)850 mm

Nº guides - 8

STC W 1/1 Hood

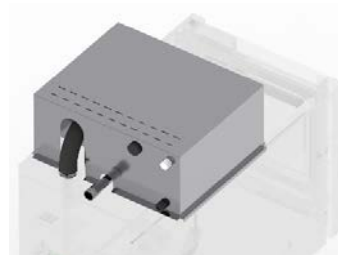
Ref. 710483



(An)720x(F)620x(AI)235 mm

ST W COMPACT Fumes condenser kit

Ref. 710488



(An)720x(F)330x(AI)235 mm

Superposition kit

Ref. 710486



(W)720x(D)620x(H)80 mm

First instalation kit

Ref. 710434



The kit contains

Pipes, connections, adapters and required accesories for the oven installation

1kg of detergent

1kg of rinse

Wheels

Ref. 710286

