

STC 411 V5

Hostelery oven



Ref. 710461



- Change door opening:

FEATURES

- Digital display in control panel system
- End of cycle alarm
- Door switch
- Interior LED light
- 3/4 water connection
- Easy to clean folding glass
- Rotation inverter
- USB port
- Multilevel

FUNCTIONS

- Clima control-humidity regulation
- % step speed control
- Steam control-programmable chimney
- 99 cooking programs
- 3 cooking modes: dry heat, vapour and mixed
- Regeneration/maintain food temperature
- User configurable cooking book with pictures
- Multicook/All on time

TECHNICAL CHARACTERISTICS

Electric power 5700 W

Maximum temperature 270 °C

Weight 57 kg

Voltage 400 V-50/60 Hz

Connection three phase

Internal dimensions (W)385x(D)560x(H)302 mm

External dimensions (W)530x(D)765x(H)580 mm

Automatic washing standard

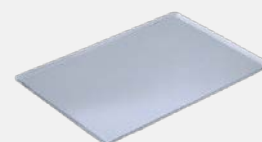
Removable core probe standard

CAPACITY

8 trays GN1/1 (20 mm depth)

4 trays GN1/1 (40 mm depth)

3 trays GN1/1 (65 mm depth)



Longitudinal tray position



STC 411 V5

Specific accessories



Stands

STC 200

Ref. 710471



(W)490x(D)670x(H)200 mm

Nº guides - 0

STC 400

Ref. 710472



(W)490x(D)670x(H)400 mm

Nº guides - 0

STC 650

Ref. 710473



(W)490x(D)670x(H)650 mm

Nº guides - 7

STC 850

Ref. 710474



(W)490x(D)670x(H)850 mm

Nº guides - 10

STC 1/1 Hood

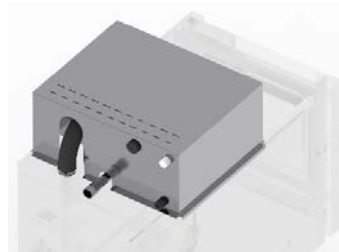
Ref. 710481



(W)630x(D)950x(H)235 mm

ST COMPACT Fumes condenser kit

Ref. 710487



(W)530x(D)475x(H)235 mm

Superposition kit

Ref. 710484



(W)530x(D)795x(H)80 mm

First installation kit

Ref. 710434



The kit contains

Pipes, connections, adapters and required accessories for the oven installation

1 kg of detergent

1 kg of rinse

Wheels

Ref. 710286

