

STC 1011 E

Hostelery oven



Ref. 710467



FEATURES

- Digital display in control panel system
- Rotation inverter
- End of cycle alarm
- Door switch
- Safety thermostat
- Interior LED light
- 3/4" water connection
- 2 speed engine
- Direct steam push button
- Easy to clean folding glass

FUNCTIONS

- 0/100% adjustable humidity
- 0/120 minutes timer
- Non-stop mode
- Manual chimney control

TECHNICAL CHARACTERISTICS

Electric power 11400 W

Maximum temperature 250 °c

Weight 92 kg

Voltage 400 V-50/60 Hz

Connection three phase

Internal dimensions (W)385x(D)560x(H)605 mm

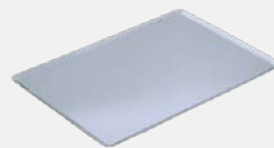
External dimensions (W)530x(D)795x(H)885 mm

CAPACITY

19 trays GN1/1 (20 mm depth)

10 trays GN1/1 (40 mm depth)

6 trays GN1/1 (65 mm depth)



Longitudinal tray position



STC 1011 E

Specific accessories



Stands

STC 200

Ref. 710471



(W)490x(D)670x(H)200 mm

Nº guides - 0

STC 400

Ref. 710472



(W)490x(D)670x(H)400 mm

Nº guides - 0

STC 650

Ref. 710473



(W)490x(D)670x(H)650 mm

Nº guides - 7

STC 850

Ref. 710474



(W)490x(D)670x(H)850 mm

Nº guides - 10

STC 1/1 Hood

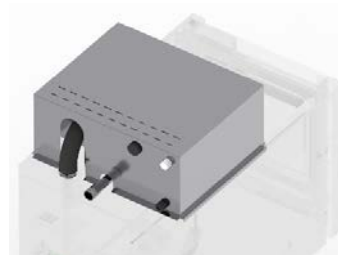
Ref. 710481



(W)630x(D)950x(H)235 mm

ST COMPACT Fumes condenser kit

Ref. 710487



(W)530x(D)475x(H)235 mm

Superposition kit

Ref. 710484



(W)530x(D)795x(H)80 mm

First installation kit

Ref. 710434



The kit contains

Pipes, connections, adapters and required accessories for the oven installation

1 kg of detergent

1 kg of rinse

Wheels

Ref. 710286

