

# STB 606 V7

*Bakery oven*



Ref. 710492



- Change door opening:

## FEATURES

- Digital display in control panel system
- End of cycle alarm
- Door switch
- Interior LED light
- 3/4" water connection
- Easy to clean folding glass
- Rotation inverter
- USB port
- Multilevel

## FUNCTIONS

- Clima control-humidity regulation
- % step speed control
- Steam control-programmable chimney
- 99 cooking programs
- 3 cooking modes: dry heat, vapour and mixed
- Regeneration/maintain food temperature
- User configurable cooking book with pictures
- Multicook/All on time

## TECHNICAL CHARACTERISTICS

**Electric power** 10650 W

**Maximum temperature** 270 °c

**Weight** 110 kg

**Voltage** 400 V-50/60 Hz

**Connection** Three phase 3F+N+T

**Internal dimensions** (W)710x(D)500x(H)550 mm

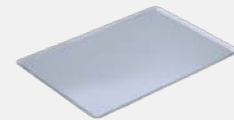
**External dimensions** (W)880x(D)945x(H)835 mm

**Automatic washing** optional

**Removable core probe** optional

## CAPACITY

**6 trays GN1/1 - 600x400**



**Transverse tray position**



**Distance between trays**



# STB 606 V7

*Specific accessories*



## Stands

### STB 300

Ref. 710508



(W)810x(D)760x(H)300 mm

Nº guides - 0

### STB 650

Ref. 710509



(W)810x(D)760x(H)650 mm

Nº guides - 6

### STB 850

Ref. 710510



(W)810x(D)760x(H)850 mm

Nº guides - 8

## STB V7 Hood

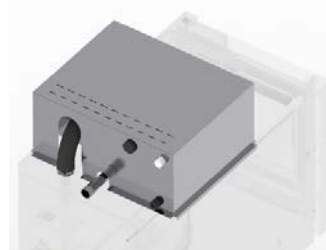
Ref. 710515



(W)880x(D)1105x(H)315 mm

## STB V7 Fumes condenser kit

Ref. 710518



(W)510x(D)210x(H)315 mm

## Superposition kit

Ref. 710519



(W)880x(D)935x(H)80 mm

## First installation kit

Ref. 710434



### The kit contains

Pipes, connections, adapters and required accessories for the oven installation

1 kg of detergent

1 kg of rinse

## Wheels

Ref. 710286



Wheeled option