

# STB 616 ET

Bakery oven



Ref. 710499

## FEATURES



- Digital display and encoder
- Rotation inverter
- End of cycle alarm
- Door switch
- Safety thermostat
- Interior LED light
- 3/4" water connection
- Two speed engine
- Direct vaporization push button
- Easy to clean folding glass

## FUNCTIONS

- 0 to 100 % humidity regulation
- 0-120 minute timer
- Non-stop mode
- Available with gastronorm GN trays
- Chimney manual control

## TECHNICAL CHARACTERISTICS

Electric power 26.250 W

Maximum temperature 250 °C

Weight 252 kg

Voltage 400 V-50/60 Hz

Connection Three phase 3F+N+T

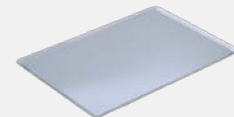
Internal dimensions (W)700x(D)500x(H)1480 mm

External dimensions (W)880x(D)930x(H)1865 mm

Trolley standard

## CAPACITY

16 trays 600x400



Transverse tray position



Distance between trays

80 mm

# STB 616 ET

*Specific accessories*



## STB V7 Hood

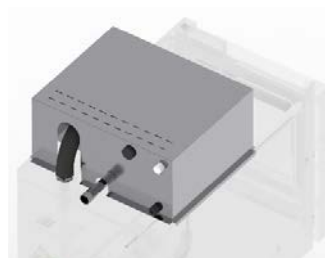
Ref. 710515



(W)880x(D)1105x(H)315 mm

## STB V7 Fumes condenser kit

Ref. (ASK DEALER)



DIMENSIONS: ASK DEALER

## First installation kit

Ref. 710434



**The kit contains:**

Pipes, connections, adapters and required accessories for the oven installation

1 kg of detergent

1 kg of rinse